



Advanced Group Temperature Screening and Digital Signage

F3VR Check Kiosk

Multi-Person, non-contact, socially distanced Elevated Temperature Screening Kiosk with integrated Digital Signage from TouchIT Technologies.

Advanced Group Temperature Screening and Digital Signage in one product

Portable Stand-Alone Kiosk with Integrated Thermal Camera, 55" Display and Built-in PC



Built on Contribute Signage
Remotely Controlled Digital Signage Platform.



IR Elevated Temperature
Check



Group Screening Up To 10
People Simultaneously



Visual and Text Alerts



Up to 10.5ft (3m) detection
distance



Contactless, Socially
Distanced



55" Standalone All-In-One
Kiosk Solution

F3VR Check Kiosk Specifications



IR Thermal Camera

Sensor Technology	Uncooled A-Si Microbolometer
Spectral Range	Longwave Infrared, 8µm to 14 µm
IR Resolution	6400 pixels
Array Format	80 x 80 Progressive Scan
Pixel Size	34 µm
Effective Frame Rate	30 FPS
Thermal Sensitivity	<150 mK
Scene Dynamic Range	20°C to 45°C (68°F to 113°F)
Radiometric Accuracy	±0.3°C @ 30°C to 45°C (86°F to 113°F)
Non-uniformity Correctness	Shutterless
Field of View	60° lens F/1.3
Operating Temperature	5°C to 50°C (41°F to 122°F)
Detection Range	3.2m (10.5ft)
Simultaneous Detections	10 People
Elevated Temperature Alarm	(Optional) Visual, Audio & Text



Integrated OPS PC

OPS PC	Intel OPS
CPU	Intel i5
RAM	DDR4 4GB
ROM	128 GB SSD
OS	Windows 10 (no license, unactivated)
Warranty	1 Year

55" Touch LED

Screen Size (Diag.)	55"
Resolution	3840 x 2160
Aspect Ratio	16:9
Brightness	450 cd/m2
Contrast Ratio	5000:1
Viewing Angle(H/V)	178°/178°
Response Time(G to G)	6ms
Backlight Unit	Direct LED
Backlight Life	50,000 Hours
Touch Technology	High Precision & Lower Z-axis 32pt Touch
Touch Resolution	32768 x 32768
Supported OS & Touch Points	Win 10/8/7: 32pt, Win XP: 1pt, Mac: 1pt, Android: 16pt, Chrome: 1pt
Minimum Recognition Size	Φ3mm
Tempered Glass	Anti-glare 4mm
Video (analogue)	VGA x1, AV x1, YPbPr x1
Video (digital)	HDMI 2.0 x3, DP 1.2 x1 USB-C 3.1 Gen2 x1
Audio	Line in (3.5mm) x1 MIC (3.5mm) x 1
Media (Android)	USB 2.0 A-type x1, USB-C x1, Micro SD card reader x1
Media (Android/PC/OPS)	USB 3.0 A-type x2
LAN	RJ45 x 1
Screen Control	RS232C (In/Out) x1
Video (analogue)	AV x1
Video (digital)	HDMI 2.0 x1
Audio	SPDIF (Coaxial) x1, Line out (3.5mm) x1
Touch	USB 2.0 B-type x3 USB-C 3.1 Gen2 x 1
LAN	RJ45 x1
Built-in Speakers	16W x2
Input Voltage	AC100~240V 50/60Hz
Power Consumption (Typical)	220 Watts
Power Consumption (Standby)	0.5W
Operating Temp.	0-40
Operating Humid.	20-80% RH
Dimension (WxHxD)	1523×945×107mm (59.96" X 37.2" X 4.21")
System Version	Android 8.0
Kernel	4.9
CPU	ARM Cortex-A73 Dual-core, ARM Cortex-A53 Dual-core
GPU	ARM Mali-G51 MP4 Quad-core
RAM	4GB DDR4
ROM	32GB
Warranty	1 Year

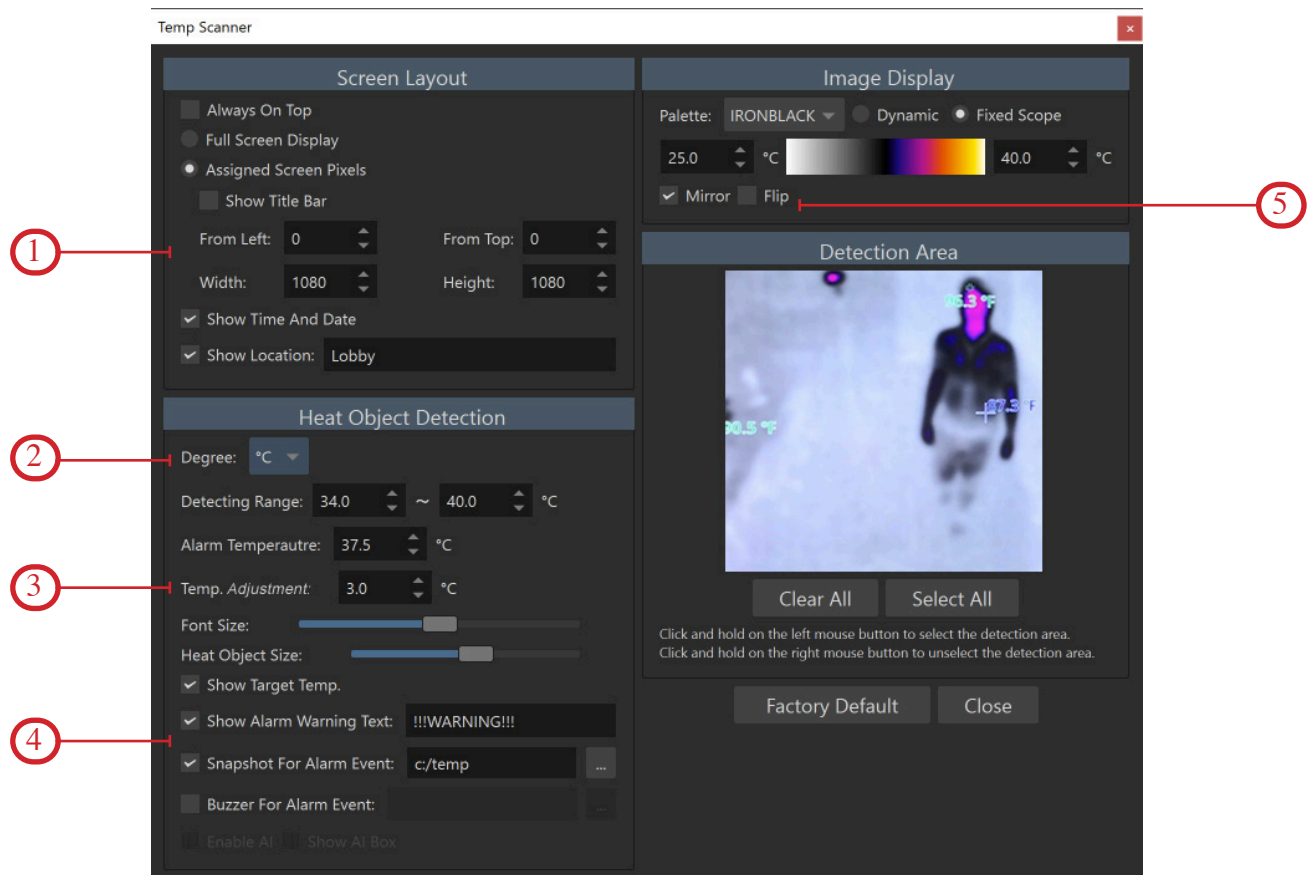
Software

- Software is pre-installed on the internal OPS PC.
- You will need to calibrate the Thermal Camera using the non-contact thermometer included in the box.
- You will need to activate your Contribute Signage Account at www.contributesignage.com to display digital signage on your F3VR Kiosk.

Thermal Camera Software

Thermal Camera software is simple, easy to use and configure with only a single screen of options and a 5 step process.

1. Set your position of the screen (top is default) and choose whether to show the location and the time.
2. Select Celcius or Fahrenheit.
3. Calibrate the Thermal Camera by taking your own temperature with the non-contact thermometer which is included in the package. Adjust the temperature readings as required & set your alert temperature.
4. Configure your elevated temperature alerts, where to save a screen shot (if required) and any audible .mp3 you wish to use.
5. Finally, select whether you wish to see a flipped image or not.

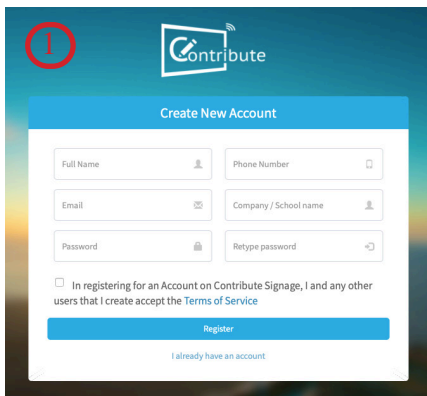


Software

Contribute Signage software allows you to display Digital Signage while simultaneously displaying the IR Thermal Camera detail on your F3VR Check Kiosk. Full details and features can be found at www.contributesignage.com

Contribute Signage Software

1. Visit www.contributesignage.com and create yourself an account.
2. Once inside your account, you can activate it permanently by using the serial number of your F3VR Kiosk. This can be found on the side of the LED Display.
3. You can create your layouts by using one of our pre-made signage layouts for the F3VR Kiosk or customize your own. (more info can be found at www.contributesignage.com/f3vr/)
4. You need to connect your F3VR Check Kiosk to your account by entering the unique ID that is being displayed on the bottom of the display when you turn it on and are connected to the internet.
5. Assign your layout to your F3VR Check Kiosk.



1. Create New Account

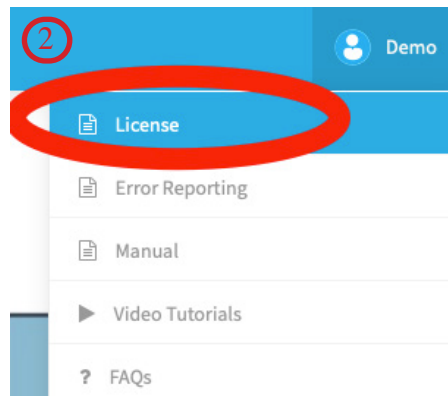
Full Name Phone Number

Email Company / School name

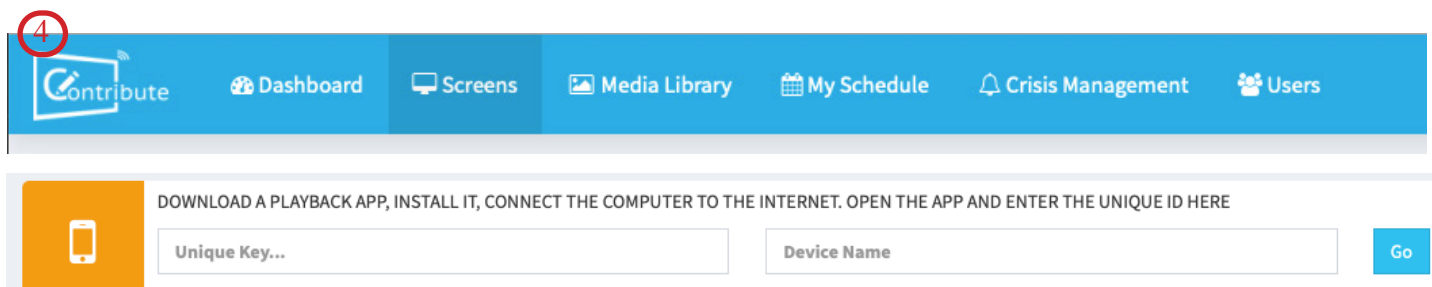
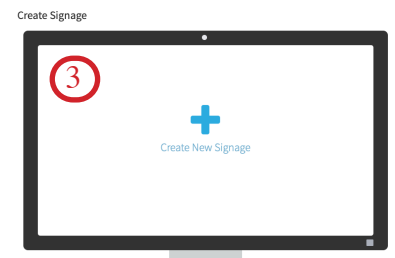
Password Retype password

☐ In registering for an Account on Contribute Signage, I and any other users that I create accept the [Terms of Service](#)

[I already have an account.](#)

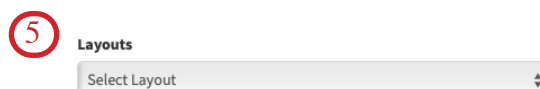


2. Demo



4. Dashboard Screens Media Library My Schedule Crisis Management Users

DOWNLOAD A PLAYBACK APP, INSTALL IT, CONNECT THE COMPUTER TO THE INTERNET. OPEN THE APP AND ENTER THE UNIQUE ID HERE



5. Layouts

Select Layout

Package Contents

IN THE BOX



55" LED



IR Camera



OPS PC



Remote Control & Batteries



Stand



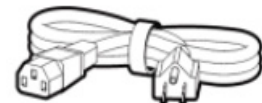
Stylus x 2



Non-Contact Thermometer



Pre-Installed Software



Power Cord (9.8' / 3M)

- Please note, the stand will require assembly and is supplied flat packed. All fixings are supplied. Hand tools may be required.
- Please note this product is designed to measure temperature. It cannot be used to detect or diagnose COVID-19/Coronavirus or any other virus.